

TIPPING TRAILER 8 TON



Basic equipment:

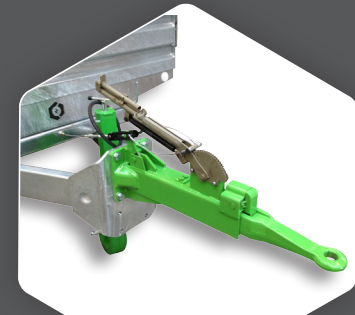
- Automatic, hydraulic locksystem backdoor
- Mechanical locksystem sideboards
- Lighting
- Support
- Turnable hitch $\varnothing 45$
- One side tipping (backwards)
- Tandem (bogie, parabolic suspension), Tires: 15/55x17
- Thickness bottom: 4 mm
- Thickness sideboards: 2 mm



SINGLE AXLE

OPTIONAL

- Tires 19/45 x 17 (set of 4)
- 3 Side tipping with hydraulic locksystem sideboards
- Overrun brake (max. weight 8.000 kg)
- Extensions (400 mm)
- Airbrakes
- Single axle with 550/45 x 22.5 tires -/-
- Other tires



OPTIONAL OVERRUN BRAKE



Specification:

1. Self closing backdoor
2. Hydraulic locksystem backdoor
3. Under and upper drawbar
4. Upper- under frame and load platform galvanized
5. Removable side boards

TIPPING TRAILER: Z080

Loadingcapacity (kg)	8.000
Dimensions bucket	450 x 220 x 60 cm
Weight trailer (kg)	2.300
Power demand (HP)	60



BACKWARDS